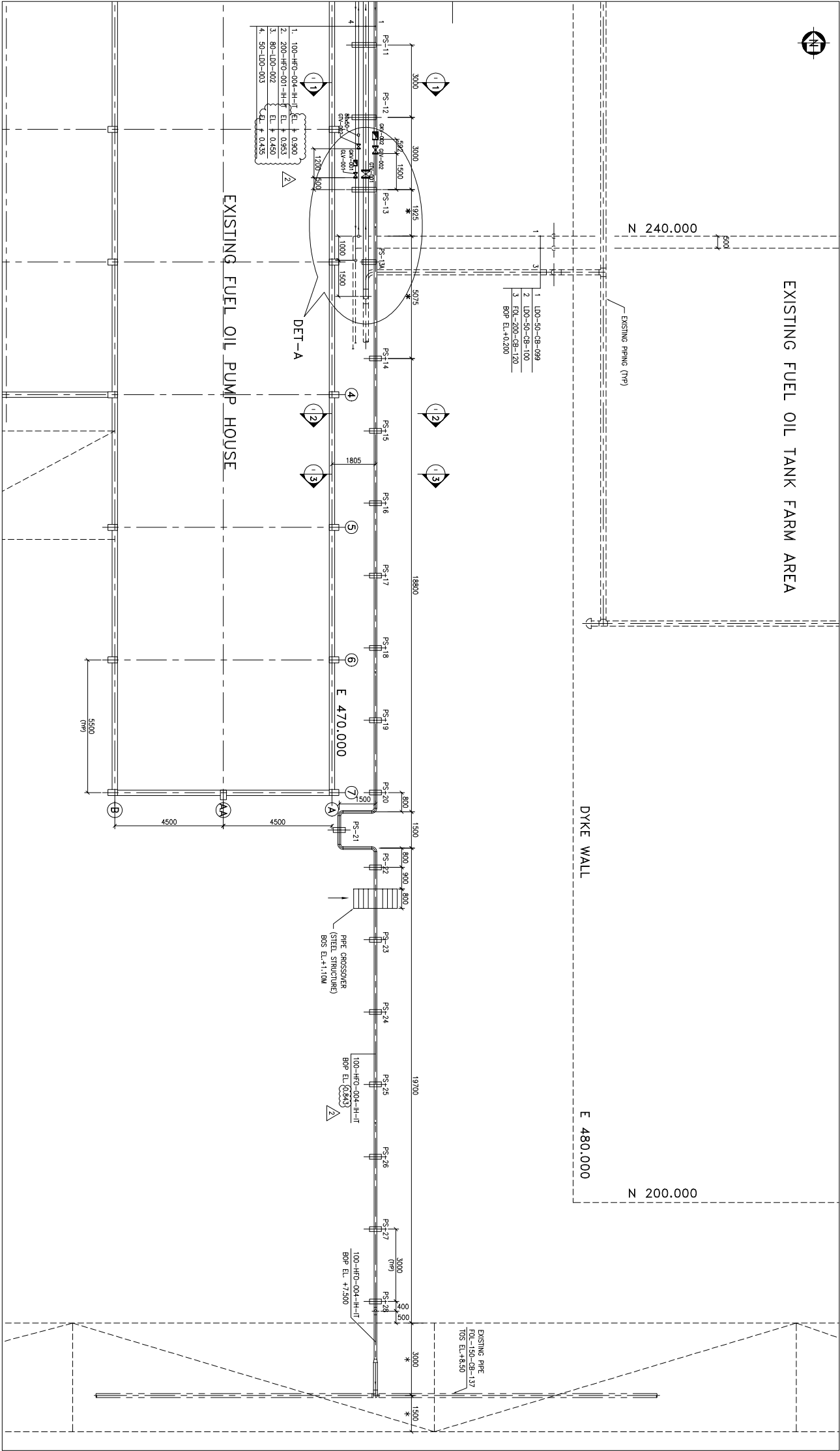


FOR CONT. REFER
DRG.No.PE-DG-226-166-M001



NOTES:

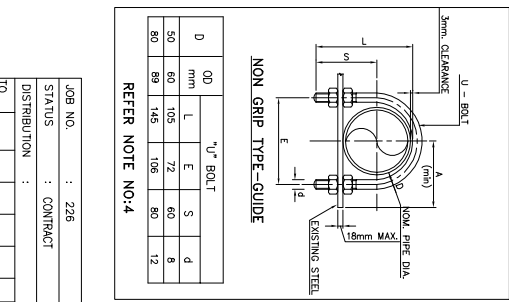
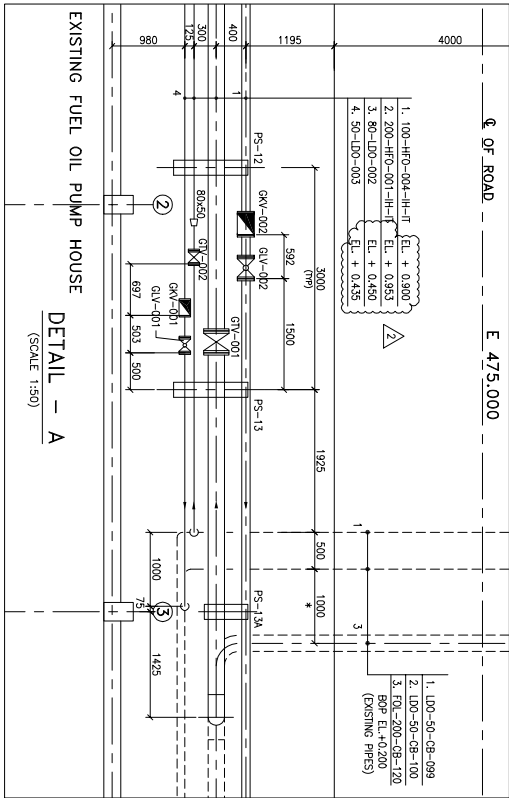
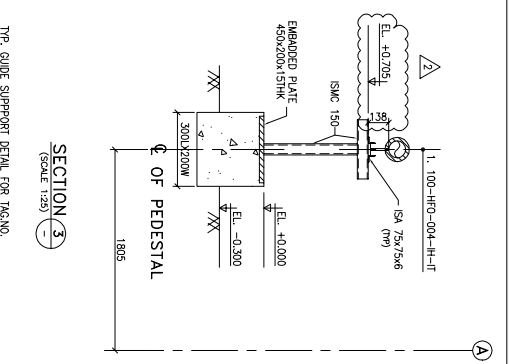
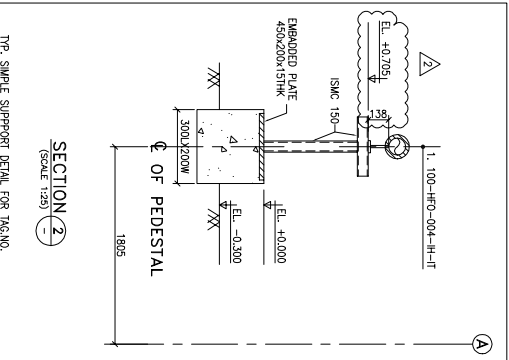
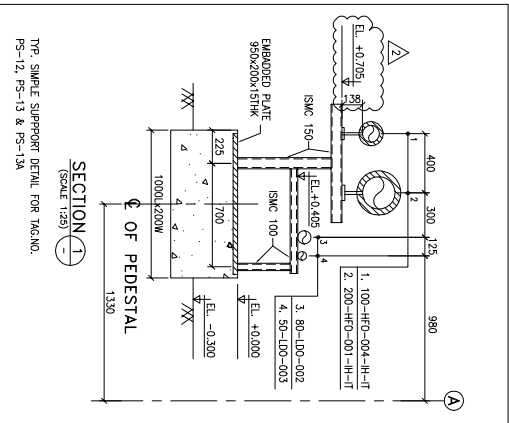
1. ALL DIMENSIONS ARE IN MM AND ELEVATIONS ARE IN METRES UNLESS OTHERWISE SPECIFIED.
2. ALL ELEVATIONS ARE REFERRED TO POWER HOUSE GROUND FLOOR ELEVATION +0.00M WHICH CORRESPONDS TO RL. 213.30M
3. TAPPING FROM EXISTING UNIT HEADER SHALL BE TAKEN DURING THE TIME OF EXISTING FUEL OIL SYSTEM UNDER SHUTDOWN AND TO BE DECIDED AT SITE.
4. * MARKED DIMENSIONS TO BE VERIFIED AT SITE.
5. NON GRIP 'U' BOLT SHALL BE PROVIDED FOR EVERY ALTERNATIVE SUPPORTS FOR UNINSULATED PIPES.

LEGENDS:

- FIG. - FINISHED GROUND LEVEL
EL. - ELEVATION
IN - INSULATION
IT - TRACING (ELECTRICAL)
- PROPOSED
- EXISTING

REF. DRAWING:

1. PE-DG-226-100-M001 - PLOT PLAN
2. PE-DG-226-166-M001 - SCHEME OF FUEL OIL SYSTEM INTER CONNECTION WITH EXISTING UNIT (BHEL-PRM)
3. 0-00-056-10553 - KEY DIAGRAM SCHEME OF FUEL OIL SYSTEM (BHEL-TRICHY)
4. TCE-2574-231-PP-1118 - TANK FARM AREA PIPING LAYOUT (TCE)
5. 3-00-056-11121 - PUMP HOUSE TERMINAL POINT (BHEL-TRICHY)



| | | | |
|-------------------------------|--|--|--|
| OWNER | | PUNJAB STATE ELECTRICITY BOARD, PATIALA | |
| PROJECT | | 2x250MW GHTP LEHRA MOHABAT THERMAL POWER PROJECT STAGE-II, UNITS 3 & 4 | |
| CONSULTANTS | | TCE CONSULTING ENGINEERS LTD, BANGALORE | |
| BHAIRAT HEAVY ELECTRICALS LTD | | PROJECT ENGINEERING MANAGEMENT NEW DELHI | |
| ENGINEERING | | FICHTNER CONSULTING ENGINEERS (INDIA) PRIVATE LTD, CHENNAI | |
| SUB CONTRACTOR | | NEW DELHI | |
| JOB NO. | | 226 | |
| STATUS | | CONTRACT | |
| DISTRIBUTION | | | |
| TO | | | |
| No. of | | | |
| D | | 1 | |
| 50 | | 105 | |
| 80 | | 145 | |
| 100 | | 106 | |
| 120 | | 80 | |
| 140 | | 12 | |
| 160 | | | |
| 180 | | | |
| 200 | | | |
| 220 | | | |
| 240 | | | |
| 260 | | | |
| 280 | | | |
| 300 | | | |
| 320 | | | |
| 340 | | | |
| 360 | | | |
| 380 | | | |
| 400 | | | |
| 420 | | | |
| 440 | | | |
| 460 | | | |
| 480 | | | |
| 500 | | | |
| 520 | | | |
| 540 | | | |
| 560 | | | |
| 580 | | | |
| 600 | | | |
| 620 | | | |
| 640 | | | |
| 660 | | | |
| 680 | | | |
| 700 | | | |
| 720 | | | |
| 740 | | | |
| 760 | | | |
| 780 | | | |
| 800 | | | |
| 820 | | | |
| 840 | | | |
| 860 | | | |
| 880 | | | |
| 900 | | | |
| 920 | | | |
| 940 | | | |
| 960 | | | |
| 980 | | | |
| 1000 | | | |
| 1020 | | | |
| 1040 | | | |
| 1060 | | | |
| 1080 | | | |
| 1100 | | | |
| 1120 | | | |
| 1140 | | | |
| 1160 | | | |
| 1180 | | | |
| 1200 | | | |
| 1220 | | | |
| 1240 | | | |
| 1260 | | | |
| 1280 | | | |
| 1300 | | | |
| 1320 | | | |
| 1340 | | | |
| 1360 | | | |
| 1380 | | | |
| 1400 | | | |
| 1420 | | | |
| 1440 | | | |
| 1460 | | | |
| 1480 | | | |
| 1500 | | | |
| 1520 | | | |
| 1540 | | | |
| 1560 | | | |
| 1580 | | | |
| 1600 | | | |
| 1620 | | | |
| 1640 | | | |
| 1660 | | | |
| 1680 | | | |
| 1700 | | | |
| 1720 | | | |
| 1740 | | | |
| 1760 | | | |
| 1780 | | | |
| 1800 | | | |
| 1820 | | | |
| 1840 | | | |
| 1860 | | | |
| 1880 | | | |
| 1900 | | | |
| 1920 | | | |
| 1940 | | | |
| 1960 | | | |
| 1980 | | | |
| 2000 | | | |
| 2020 | | | |
| 2040 | | | |
| 2060 | | | |
| 2080 | | | |
| 2100 | | | |
| 2120 | | | |
| 2140 | | | |
| 2160 | | | |
| 2180 | | | |
| 2200 | | | |
| 2220 | | | |
| 2240 | | | |
| 2260 | | | |
| 2280 | | | |
| 2300 | | | |
| 2320 | | | |
| 2340 | | | |
| 2360 | | | |
| 2380 | | | |
| 2400 | | | |
| 2420 | | | |
| 2440 | | | |
| 2460 | | | |
| 2480 | | | |
| 2500 | | | |
| 2520 | | | |
| 2540 | | | |
| 2560 | | | |
| 2580 | | | |
| 2600 | | | |
| 2620 | | | |
| 2640 | | | |
| 2660 | | | |
| 2680 | | | |
| 2700 | | | |
| 2720 | | | |
| 2740 | | | |
| 2760 | | | |
| 2780 | | | |
| 2800 | | | |
| 2820 | | | |
| 2840 | | | |
| 2860 | | | |
| 2880 | | | |
| 2900 | | | |
| 2920 | | | |
| 2940 | | | |
| 2960 | | | |
| 2980 | | | |
| 3000 | | | |
| 3020 | | | |
| 3040 | | | |
| 3060 | | | |
| 3080 | | | |
| 3100 | | | |
| 3120 | | | |
| 3140 | | | |
| 3160 | | | |
| 3180 | | | |
| 3200 | | | |
| 3220 | | | |
| 3240 | | | |
| 3260 | | | |
| 3280 | | | |
| 3300 | | | |
| 3320 | | | |
| 3340 | | | |
| 3360 | | | |
| 3380 | | | |
| 3400 | | | |
| 3420 | | | |
| 3440 | | | |
| 3460 | | | |
| 3480 | | | |
| 3500 | | | |
| 3520 | | | |
| 3540 | | | |
| 3560 | | | |
| 3580 | | | |
| 3600 | | | |
| 3620 | | | |
| 3640 | | | |
| 3660 | | | |
| 3680 | | | |
| 3700 | | | |
| 3720 | | | |
| 3740 | | | |
| 3760 | | | |
| 3780 | | | |